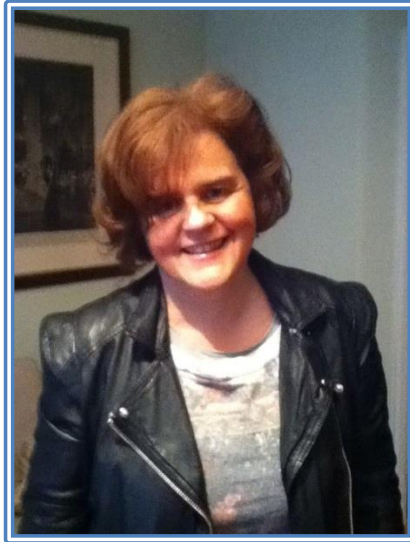


Dr Sarah O'Flynn



I have worked in a variety of secondary schools in south London over the past twenty years, teaching English and Drama. My major area of interest however, is working with pupils with Special Educational Needs or a disability, or those who are excluded from mainstream school. I am now a Principal Lecturer in Special Educational Needs and Disability at Roehampton University where I teach students to become teachers and also do my own research.

All children have a right to an excellent education – especially children who find it extremely difficult to learn and even children whose behaviour is very challenging. I believe Heathmere is working very hard for all the children who are part of its community and look forward to supporting the school – and in particular, looking out for those children with a Special Educational Need or disability. Having a Special Educational Need or disability should not hold you back in life!